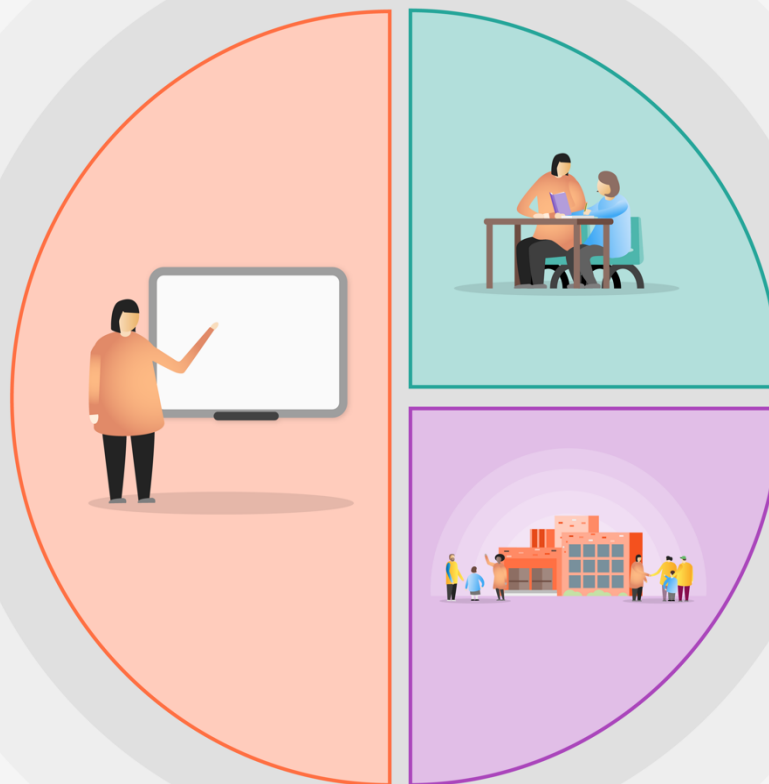


# Catch-Up Funding Strategy

## STOPSLEY COMMUNITY PRIMARY SCHOOL AND NURSERY

### 1 Teaching

- Quality First Teaching supported by evidence-informed CPD for teachers and support staff
- A broad and engaging curriculum that focuses on cross-curricular learning and a progression of skills
- Planning and teaching focuses on gap analysis (Boot Camp approach)
- Reviewing long term planning and embedding a flexible approach in reading, writing and maths to ensure appropriate curriculum coverage
- PSHE curriculum designed to include a unit of work specifically on mental health in each age group, including the introduction of a pupil 'Well-Being Journal'
- High quality resources purchased to assist with planning and delivering quality first teaching (Third Space learning; 'Write Stuff' scheme; Flash Academy)
- Further development of a Maths Mastery approach through work with the Enigma hub
- Early Years leadership time to lead and support with transition, parental engagement and new Nursery provision
- Team Development Groups to help embed and sustain research-based teaching strategies
- CPD programmes to develop targeted staff with pedagogical development
- Assessment system purchased and embedded to ensure consistency and accurate performance data for gap analysis



### 2 Targeted academic support

- Speech and language therapist works in school weekly
- Mindfulness teacher weekly in KS2
- Dance teacher weekly in KS2
- Trauma informed schools training for staff and intervention / provision for pupils
- Full time Pastoral Assistant working across the school, including CPD to develop this role
- Local football club staff lead PSHE work with Year 6 weekly
- 1:1 tuition for KS2 pupils in English and maths
- Booster classes taught across KS2
- Phonics booster sessions in KS1
- Daily intervention delivered by Higher Level Teaching Assistants and Teaching Assistants
- TA training schedule

### 3 Wider strategies

- Full time PE Assistant to lead and support with the teaching of curriculum PE and delivering intervention and clubs
- Family Worker and Assistant to support all families with need
- Safeguarding Officer time
- Chrome Books provided for pupils with limited access to technology at home
- SENDCo time for weekly communication with EHCP pupils' parents
- Physical environment to support individual learner's needs
- CGP materials purchased for Year 6 pupils to access full programme of work at home

# Catch-Up Funding Strategy

Funding received 2020-2021: £38,000

Total expenditure planned: £57,350

## TIER 1 – Teaching and whole school strategies

Target group	Activity	Lead	Timeline	Cost
Teaching staff from Reception to Year 6	Team Development Groups happen termly – teachers released to do paired observation	TW	Ongoing	£3150
Year 5 teaching staff	Coaching and lesson study programme to further develop quality of teaching	NB	Spring term	£2250
Year 4 teaching staff	Coaching and lesson study programme to further develop quality of teaching	NB	Summer term	
Year 6 teaching staff	Coaching and lesson study programme to further develop quality of teaching	NB	Summer term	
All pupils from Year 1 to Year 6	Design and implement 'Well-Being Journal' to support mental health work in PSHE	Well-Being team	September 20	£2000
All pupils from Year 1 to Year 6	Purchase 'Third Space Learning' for maths planning	Maths leaders	September 20	£300
	Purchase 'The Write Stuff' teaching resources and 'writing rainbows'	English leaders	September 20	£550
EAL pupils who are assessed as A and B in Year 3 to Year 6	Purchase 'Flash Academy' IT package to provide teaching resources for EAL pupils and to reduce time teachers spend on inputting assessment for EAL pupils	EAL Leader	November 20	£2500
Maths leadership team to support all pupils from Year 1 to Year 6 in maths	Release maths leader to attend teacher research group termly with Enigma Hub and follow-up session time for training staff	JD	November 20	£350
Early Years Foundation Stage team to support all pupils in Nursery and Reception	Release EYFS leader once weekly to work on transition, parental engagement and new nursery provision	MJ	Summer and autumn 20	£3000
Teaching staff from Nursery to Year 6 and Senior Leadership Team	Purchase and embed new HfL assessment system and use for termly data sets to lead Pupil Progress Meetings	SLT	September 20	£1000
Total cost:				£15100

## TIER 2 – Targeted support

Target group	Activity	Lead	Timeline	Cost
Pupils with low speech and language ability across the school, including those with recommendations from external agencies	Employ speech and language therapist weekly to deliver 1:1 and small group support for targeted children, and to train targeted staff in speech and language intervention and whole-class strategies	SENDCo	Autumn 20	£3000

Year 4 pupils where there is extreme need and was poor engagement during lockdown. Year group changed from three classes to two so concern about children settling in to new classes when school reopened	Mindfulness teacher to deliver 1 hour lesson to each class weekly	YGL	Autumn 20	£1000
Year 4 to year 6 pupils who need further exercise and activity as a result of lockdown and improve well-being	Dance teacher to deliver 30 minute lessons to each class weekly	YGL	2020-2021	£3000
All pupils across the school, particularly those with Child Protection issues, those with conditions such as ADHD and those who experienced trauma as a result of COVID-19	Whole staff team training on Trauma Safeguarding Officer training to become lead facilitator SLT training to become lead Trauma team School gains Trauma Informed accreditation	Safeguarding Officer	Ongoing	£1800
Pupils across Key Stages 1 and 2 who have experienced emotional difficulties, neglect and bereavement as a result of COVID-19	20% of Pastoral Teaching Assistant time to meet and provide targeted support for these pupils	Pastoral Teaching Assistant	2020-2021	£4400
Year 6 pupils to ensure they are ready for secondary education	Luton Town FC staff deliver 40 minutes PSHE lessons weekly	YGL Sports leader	Ongoing	£1000
Targeted Year 4 to year 6 pupils who were working at ARE in spring 2020 but have fallen behind ARE as a result of COVID-19	SLT deliver 1:1 tuition weekly in maths and English	SLT YGLs	Spring term	£2100
Pupils in years 4 to 6 who are not on track to meet projected attainment (concerning progress measures)	Teachers deliver booster classes for targeted pupils (includes a range of abilities) before and after school for 45 minutes weekly in English and maths	SLT YGLs	Second half autumn term to second half spring term	£4800
Key Stage 1 pupils on track to not pass the Phonics Screening Check in year 1 and the Phonics Screening Check re-take in year 2	Phonics booster delivered during the afternoon by class teachers	YGLs	Second half autumn term to June 2020	£0
Targeted pupils in Reception to year 6 who are not on track to meet projected attainment or who have not understood the current learning	Catch-up intervention takes place with small groups of targeted pupils daily in the afternoon for reading, writing, maths, memory, social skills and cognitive learning difficulties	SENDCo YGLs	September 20	£0
Education support staff team, ensuring quality support with teaching and intervention	Release key teachers or subject leaders to deliver training to Teaching Assistants in appropriate development areas	TA Manager SENDCo Subject leaders	Ongoing	£1050
Total cost:				£17350

### TIER 3 – Wider strategies

Target group	Activity	Lead	Timeline	Cost
Pupils across Key Stages 1 and 2 who have experienced less exercise and activity as a result of lockdown due to COVID-19	20% of PE Assistant time to deliver before school and after school multi-sports clubs	PE Assistant	2020-2021	£3600
Families of pupils in Early Years, Key Stages 1 and 2 who have experienced difficulties as a result of to COVID-19	20% of Family Worker and Family Worker Assistant time to meet and support families in need, including home visits and EHA work	Family Worker Family Worker Assistant	2020-2021	£9200
Families and pupils in Early Years, Key Stages 1 and 2 who have experienced difficulties as a result of to COVID-19	20% of Safeguarding Officer time to communicate with and support families and pupils, as well as liaison with external agencies, such as Social Services	PE Assistant	2020-2021	£6400
Pupils who have a social worker	Chrome books are loaned to fourteen CP pupils to ensure they can access home learning whilst absent from school during lockdown and during any absence in 2020-2021. Nine further Chrome books loaned out to Disadvantaged families. Thirty five Chrome books loaned to families who haven't got a device or only have one that siblings have to share.	Safeguarding Officer	Ongoing	£0 (funded through LA)
Pupils who have an EHCP	10% of SENDCo time to communicate with and support families and pupils with an EHCP, and to plan for effective transition	SENDCo	Ongoing	£5600
All pupils across the school	Create and develop intervention spaces	SLT	Ongoing	£0
All Upper KS2 pupils	Purchase and distribute CGP grammar, maths and reading materials to help with home learning	YGL	September 20	£500
Total cost:				£24900