



THE STOPSLEY NEWS

ALL ABOUT STOPSLEY COMMUNITY PRIMARY SCHOOL AND NURSERY

9th Jan 2026

Dear Parents,

Welcome back for the spring term. It has been lovely to see all of the children again – we hope they have enjoyed their first week back. On behalf of all of the staff and Governors, I would like to wish you all a very happy new year. We hope you and your families had a wonderful Christmas break.

This half term, our whole-school learning behaviour is Challenge. This is shown on our golden posters around the school and is represented by an Eagle. We are encouraging children to step outside their comfort zones, have a go at tricky activities and to keep trying, even when learning feels difficult. By embracing challenge, the children learn that mistakes are part of learning and that effort and perseverance help them improve. You can support this at home by praising your child for trying hard, encouraging them to 'have a go' and by celebrating times when they take on a particular challenge (whether they achieve it or not).



We are committed to developing the whole child, supporting not only academic learning but also children's emotional wellbeing, social skills and confidence. We aim to help every child feel safe, valued and ready to learn. We are proud to be the only Trauma Informed primary school in Bedfordshire and Luton, meaning we understand how life experiences can affect behaviour and learning, and we always try to respond to children with care and consistency. We hope that parents recognise this – we want the children to have the best school experience ever.

We are also delighted to hold the Bronze Rights Respecting School Award, which reflects our commitment to promoting children's rights, respect and responsibility throughout our community. On this note, I want to say a huge well done to all of our children who spent last term working hard as Prefects, House Captains, Play Leaders, Well-being Champions or Anti-Bullying Ambassadors.

Mr Fordham
Headteacher



IMPORTANT MESSAGE REGARDING SCHOOL EMAILS

Our emails are still being diverted to junk folders. This is an external security issue and not something that is a quick fix. Our IT team are working hard to get this resolved. In the meantime, please can we ask that you check your junk folder for emails from the school daily to ensure you do not miss any important messages. Thank you for your patience.

IMPORTANT WEATHER NOTICE

In the event that we have snow and the school has to be closed, parents will be informed by email and it will also appear on our school website and social media platforms. School closure is also reported on Heart FM radio and on the Luton Borough Council website.

We will always make every endeavour to keep our school open but the safety of children and staff is paramount.

ATTENDANCE MATTERS

WELL DONE TO OUR CLASS ATTENDANCE WINNERS THIS WEEK!

Key Stage 1:
Badgers and
Freedman 100%

Prize: A fun afternoon and
a fun afternoon with the
iPads

Key Stage 2:
Sharman, Jeffreys and
Bolt 100%

Prize: A class game of
dodgeball, a day of
choosing who to sit next
to and a fun lesson on the
iPads.

SPRING TERM DATES TO REMEMBER!

Wednesday 14th January	Individual and sibling photos	Monday 9th March Tuesday 10th March	Reception height, weight and audiology screening
Thursday 15th January	Spring Census menu	Tuesday 10th March	Grandparents Coffee Morning
Tuesday 20th January	Year 5 trip to Bletchley Park	Tuesday 10th March	Parent's Evening 3.45pm - 5.45pm
Monday 2nd February	Reception vision screening	Wednesday 11th March	Parent's Evening 3.45pm - 7.45pm
Tuesday 3rd February	Choir and Year 4 at Young Voices	Wednesday 11th March Thursday 12th March	PTA Mother's Day pop up shop
Wednesday 4th February	Year 5 Wonderdome workshop	Friday 20th March	Red Nose Day
Monday 9th February - Friday 13th February	Children's Mental Health Week	Wednesday 25th March	Year 3 and 4 production - 'Spring Chicken The Musical' 11.00am - 12.00pm 2.00pm - 3.00pm
Tuesday 10th February	SEN Coffee Morning	Thursday 26th March	Rock Steady Easter concert
Friday 13th February	Last day of half term	Thursday 26th March	School discos
Monday 23rd February	Back to school	Friday 27th March	Last day of term
Thursday 5th March	World Book Day World Book Day menu	Monday 13th April	Back to school

sports

We're straight back to it this week with year 5 and 6 sports hall athletics. This was rearranged from earlier in the year. We took a team of 24 children who competed in a variety of track and field events. We had some excellent performances and showed some brilliant athletics, especially in some of the sprint events. It was a brilliant way to start the new term.

SPORTS AND EXTRA CURRICULAR CLUBS

Sign up for clubs has closed and confirmations have been sent out today.

If you did not manage to secure your child a space and they would still like to attend a club, please email the school office to be put on a waiting list.



In other exciting news, we are very excited to welcome Mr Jones! Mr Jones is a coach from Luton Town FC, who will be assisting Mr Chart with PE and the sports academy for the rest of the year. This is an exciting development which will enable us to support our children even further with their PE and increase our Extra-Curricular clubs after February half term. This is part of the unique partnership we have with Luton Town FC that other primary schools in Luton do not have, so we are very fortunate! Mr Jones starts on the 19th of January.



PTA NEWS

Thanks for all your Christmas orders!! We were able to raise

£138.01

in commission towards fundraising for the school.

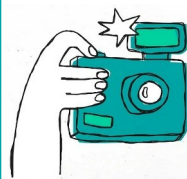
We hope you enjoyed all your purchases personalised with your child's artwork.



SCHOOL PHOTOS

Your child's individual and sibling photographs will take place on **Wednesday 14th January**

Please ensure the children are wearing correct uniform and their best smiles!



YEAR 6 LEARNING REVIEW DAY

Instead of Parent's Evening, year 6 will have a Learning Review Day on **Tuesday 27th January**.

Please ensure you book your appointment slot with your child's teacher on Arbor.

Hitchin Road, Luton LU2 7UG • Tel: 01582 611035

Email: schooloffice@stopsley.primaryluton.co.uk

f : Stopsley Community Primary School • Instagram : StopsleyPrimary

Website: www.stopsleyprimary.co.uk